

Environmental and Occupational Health & Safety Unit

OHS ALERT

SPOTTERS MUST BE ON THE GROUND FOR ALL SCISSOR LIFT OPERATORS

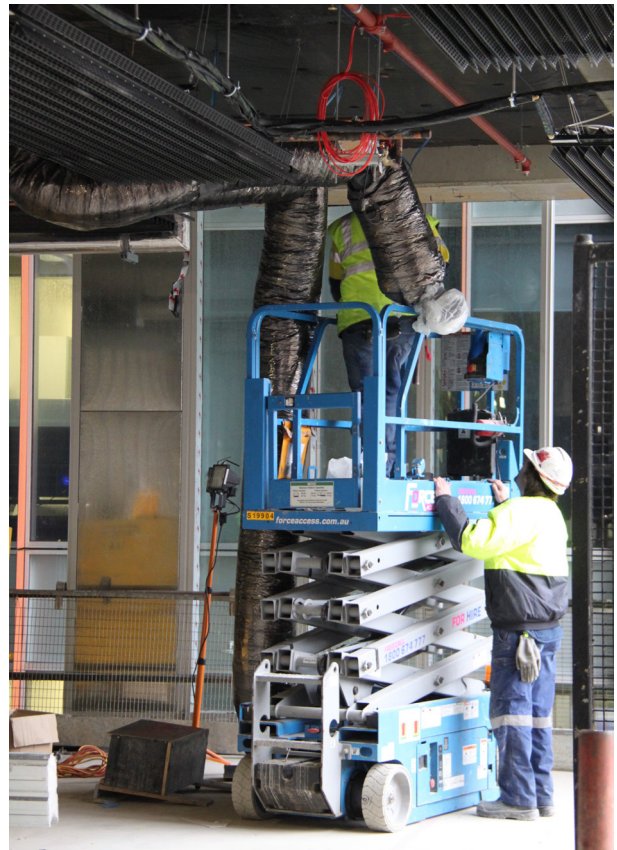
The South Australian Coroner has recommended that spotters be used whenever scissor lifts are operated on construction sites in order to save construction workers' lives.

The Coroner handed down his findings in the inquest into the death of Jorge Castillo-Riffo, who was crushed to death by a scissor lift on a Leighton/Hansen Yuncken site in Adelaide in 2014.

Until standardisation of control mechanism is achieved, Scissor Lifts are not to be operated unless there is a person on the ground operating as a Spotter. The spotter must be available at all times to activate the emergency lowering mechanism should that be necessary.

The spotter must also be trained and competent to operate that piece of plant.

Stand Up, Speak Out, Come Home.



Contact the CFMEU Health and Safety Unit if you have any concerns:

02 8524 5800

Safety is union business.
Stand up. Speak out. Come home.